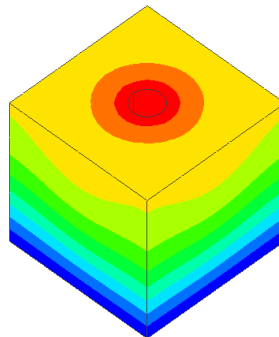
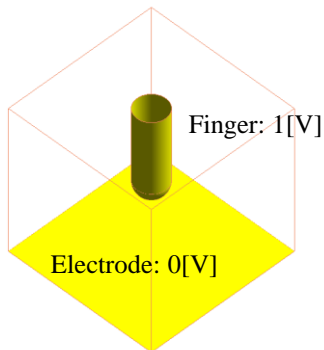


Question 2

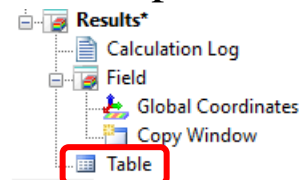
Q: How to calculate capacitance between a finger and an electrode?

A: Set electric potential boundary conditions to the finger and electrode. The electric potential of 1 [V] and 0 [V] are set to the finger and electrode, respectively as shown below.

After the calculation, the result table indicates the capacitance.



Potential contour



Table

Voltage [V]	Capacitance [F]	FEM Info
Electrode 1		V0
Electrode 2		V1
C1-2	1.624e-13	