

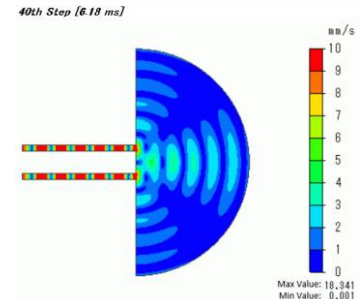
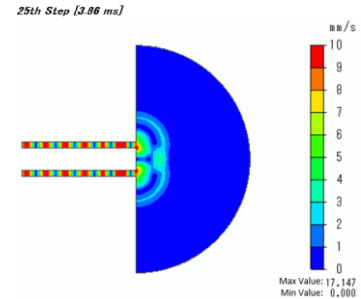
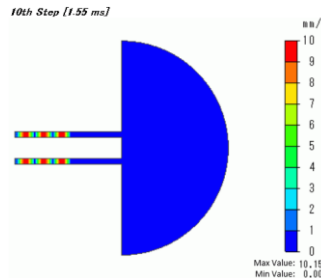
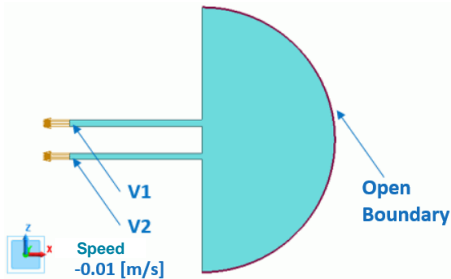
# Question 20

**Q:** What analysis can be performed by the acoustic-transient analysis?

**A:** The transient waves such as rising waves can be analyzed.

Unlike in the harmonic analysis, in the transient analysis, waveform type can be freely selected from Sine wave, Square wave, and User to define.

Example 11: Interference of Sound Waves (2D Transient Analysis) of the acoustic analysis



Boundary Condition Name/Topology	Tab	Boundary Condition Type	Settings
Open/Face	Sound Wave	Open Boundary	-
V1/Face	Acoustic	Speed (Sine Wave)	-0.01 [m/s] 1 [kHz]
V2/Face	Acoustic	Speed (Sine Wave)	-0.01 [m/s] 1 [kHz]