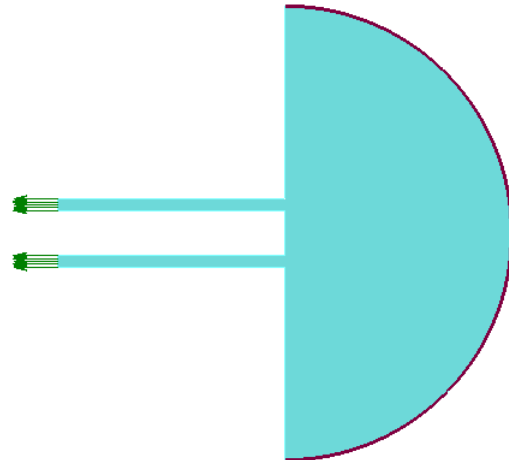
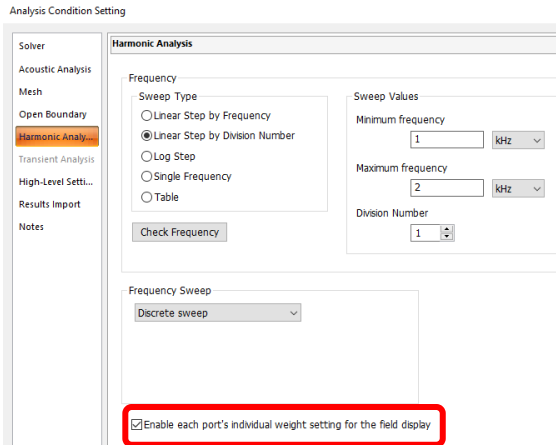


# Question 2

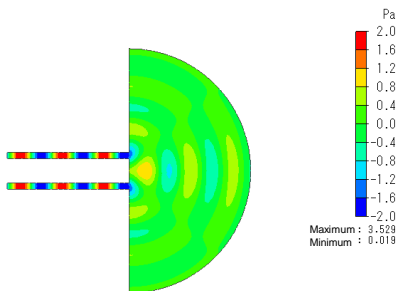
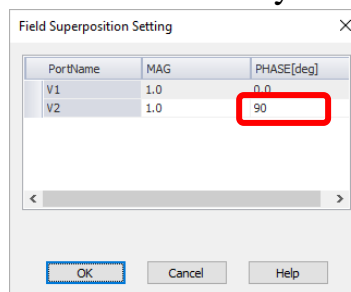
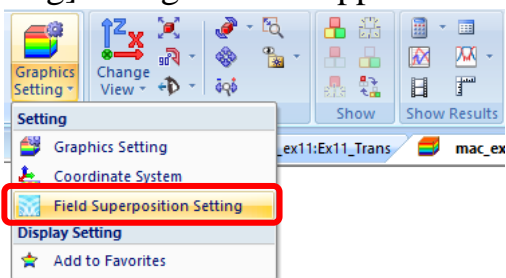
**Q:** After the acoustic analysis, how to change the phase parameter?

**A:** In the [Analysis Condition Setting] dialog box, if [Harmonic Analysis] has been selected for the analysis type on the [Acoustic Analysis] tab, select [Enable each port's individual weight setting for the field display] on the [Harmonic Analysis] tab, then change the phase parameter.

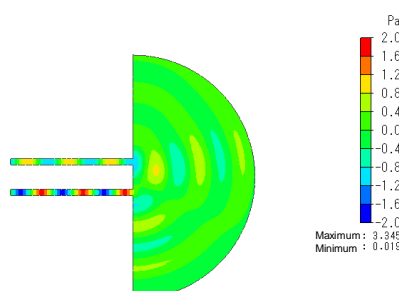


# Additional Information

After calculations, go to the [Results] tab. Click [Graphics Setting] and select [Field Superposition Setting] on the right-click menu, and then the [Field Superposition Setting] dialog box will appear. Change the phase for each boundary condition.



Contour of Sound Pressure Distribution  
(In-Phase)



Contour of Sound Pressure Distribution  
(Phase Difference of 90 degrees)