

Thermal Analysis

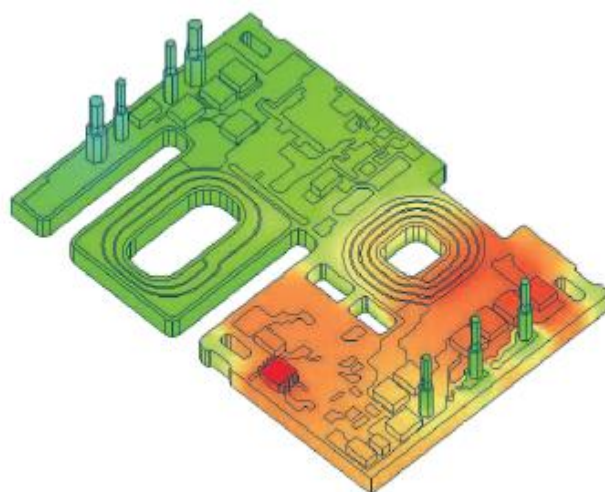
3D/2D Finite Element Method Analysis Software

Drive Your Ideas to Reality

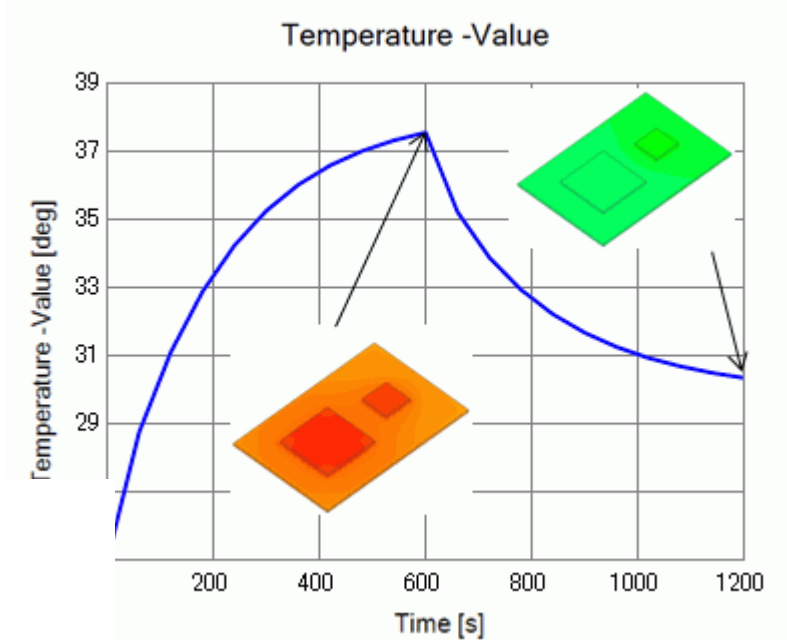
Thermal solver simulates, just to name a few, the temperature distribution in a solid. Steady-state and transient analyses can be performed. It solves the nonlinear materials as well. Coupled with mechanical stress solver, thermal stress resulting from the temperature distribution can be solved.

Capabilities at a Glance

- Natural convection
- Forced convection
- Radiation
- Thermal resistance
- Cooling
- Steady-state analysis
- Transient analysis
- LED device
- IC module



Heat Radiation



Transient Analysis

[Try Femtet free of charge for 60 days](#)

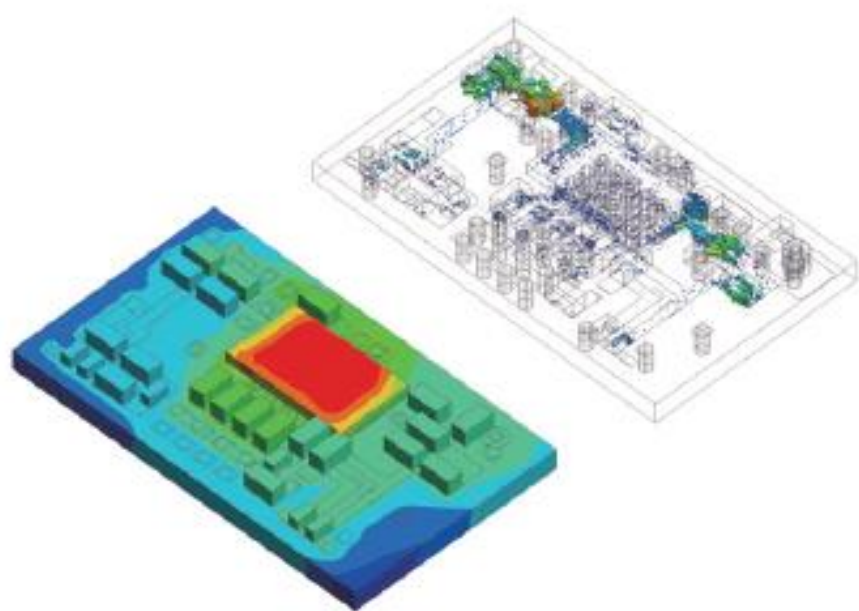
Thermal Analysis

3D/2D Finite Element Analysis Software

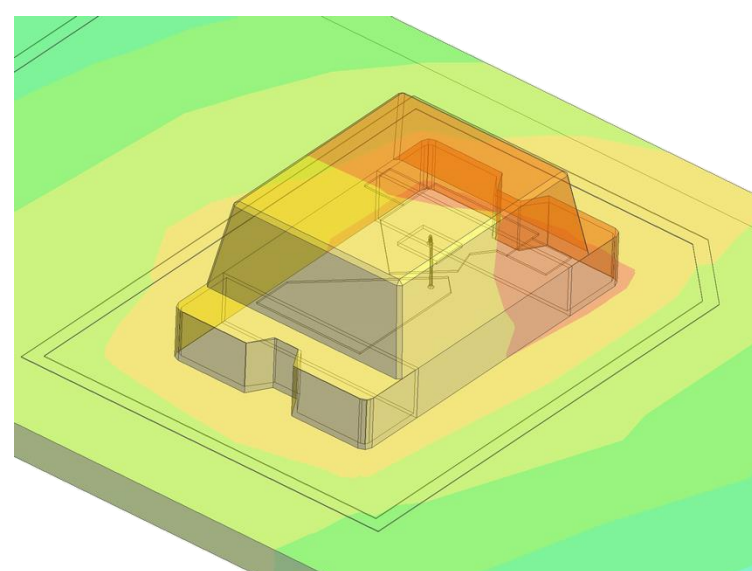
Optimization Is What Counts

How you optimize your design is important, especially in the early stages of your engineering activity. It will reduce the incurring time and cost of, product development and making/re-working prototype samples.

The thermal solver provides you with the best possible solution to your design by calculating the items like temperature distribution and heat transfer.



IC Module



LED Device

Further Benefits

Comprehensive Functionalities

All in one package from modeling to meshing, simulation, and to results display.

Intuitive Operations

Rich in graphical user interface.
Automatic meshing suitable for each analysis condition.

Efficient Engineering

Capable of batch processing and parametric analysis that are essential for optimizing your design. VBA macro function is available.

Database Management

A wide range of data can be stored and shared among a group of users; materials, body attributes, and analysis conditions

CAD Translator

Supports various kinds of CAD formats to import and export, and lets you use the data on hand straight away.

Multiphysics

In addition to the thermal analysis, Femtet has solvers for the mechanical stress, the magnetic field, the electromagnetic waves, and the simple fluid. A coupled analysis of these solvers is possible.