

Question 3

Q: How to calculate resistance?

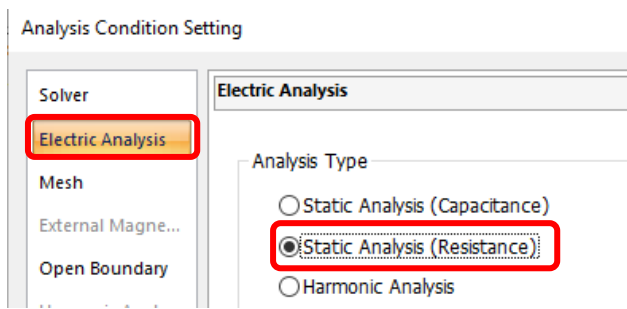
A: Select [Electric Analysis] on the solver tab in the analysis condition setting dialog box.

Then select [Static Analysis (Resistance)] for the analysis type on the electric analysis tab.

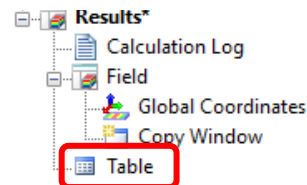
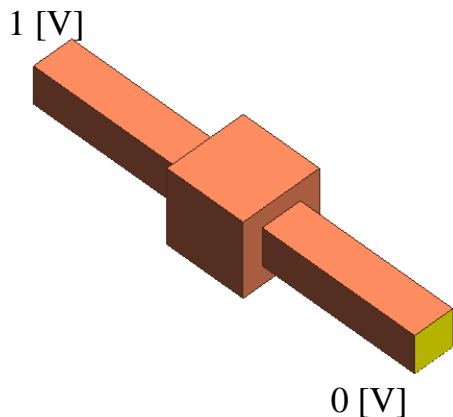
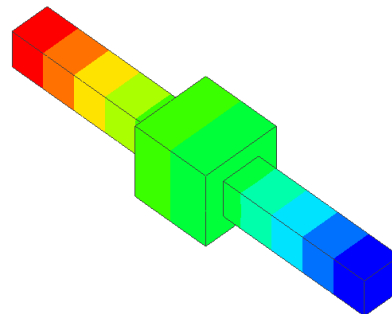
Specify the material property of electric conductivity.

Then set the electric potential boundary conditions and specify 1 [V] and 0 [V].

After calculation, the result table will indicate the resistance (See the next slide).



Electric potential contour



Table

Current [A]	Voltage [V]	Resistance [ohm]	Electr
		Value	
	Electrode 1	V0	
	Electrode 2	V1	
	R1-2	1.96e-5	