

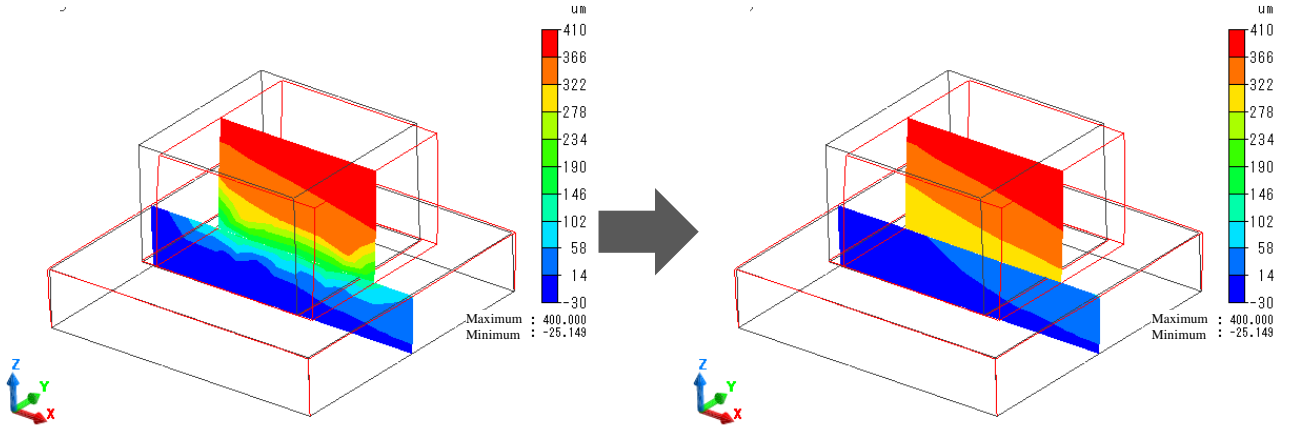
Q: When two bodies having the same material name are in simple contact, the cross section contour values on the simple contact face are averaged and displayed to be continuous.

A: Due to the internal process for cross section display, the values on the contact face of the bodies having the same material are automatically averaged and displayed.

Please deselect [Averaging] on the [Contour] tab in the [Graphics Setup] dialog box.

Alternatively, with [Averaging] selected, separate the bodies at the face beforehand and set the other to be hidden while displaying the result.

Deselect [Averaging] in Graphics Setup



[Averaging] selected

[Averaging] deselected